

Ancestor's Plea

Words and Music by

Robert E. Ferguson

Arranged by

Fred Luedtke

Freely, with expression ♩ = 69-80

Voice

Piano

mf

rit.

I

Detailed description: This system contains the first four measures of the piece. The voice part is on a single staff with a treble clef and a common time signature. It begins with a whole rest for three measures, followed by a quarter note 'I' in the fourth measure. The piano accompaniment is on two staves (treble and bass clefs). It starts with a mezzo-forte (*mf*) dynamic and a tempo of 69-80. The piano part features a steady eighth-note accompaniment in the bass and a more active melody in the treble. A 'rit.' (ritardando) marking is placed above the piano part in the third measure.

5 *mf*

tried to live a good life, I tried to do what's right. I

Pno.

5 *a tempo*

Detailed description: This system contains measures 5 through 8. The voice part continues with the lyrics 'tried to live a good life, I tried to do what's right. I'. The piano accompaniment continues with the same eighth-note bass line and treble melody. The dynamic is mezzo-forte (*mf*) and the tempo is 'a tempo'. A measure rest of 5 measures is indicated at the beginning of the piano part in measure 5.

Copyright 2002

Words and Melody may not be altered.

Ancestorsplea.com

7

taught my child - ren val - ues, to stand for truth and light. I

Pno.

9

searched the world — for all my life, and wait-ed pa-tient-ly To

Pno.

11

find the gos - pel bless - ing meant to be.

Pno.

13



wit - nessed the Res - tor - a - tion, The Fa - ther and the Son. I

Pno.

13



15



watched dear Bro - ther Jo - seph kneel down up - on the ground. The

Pno.

15



17

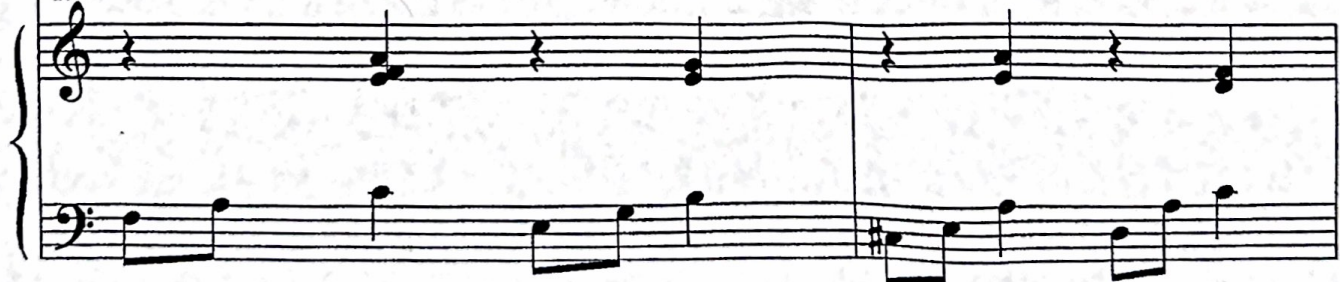


gos - pel spread to all the world in it's en - ti - re - ty. Those

mf

Pno.

17



19 *mp* *mf*
bles - sings sent _____ to oth - ers, but not me. So here I wait, and watch and

Pno. *mp* *mf*

22
pray. My tem - ple work will be done some - day. It's

Pno.

25 *mf*
up to you _____ my child, so please re - call, Your

Pno.

27 *p rit.*
fam'-ly chain— ex-tends be-yond these walls. I wait, I wait, I

Pno. *p rit.*

30 *mf a tempo*
wait. I know that you— are bus-y, you've got so much— to do. It's

Pno. *mf a tempo*

33
tough to raise— a fam-'ly I tried it just like you. So much to do,— so man-y cares, I

Pno.

36
pray that you will see, You must ne-ver for-get your heav'n-ly fam-i-ly. I've

Pno.

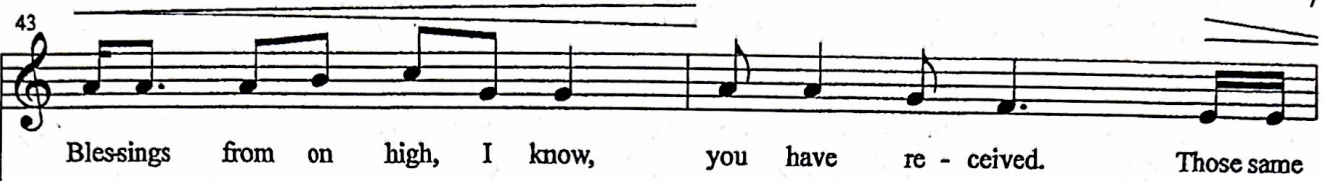
39
watched your mor - tal so - journ, I've ob - served you from a - bove. I

Pno.

41
saw you grasp the gos - pel, have bless-ings which you love.

Pno.

43 Blessings from on high, I know, you have re - ceived. Those same



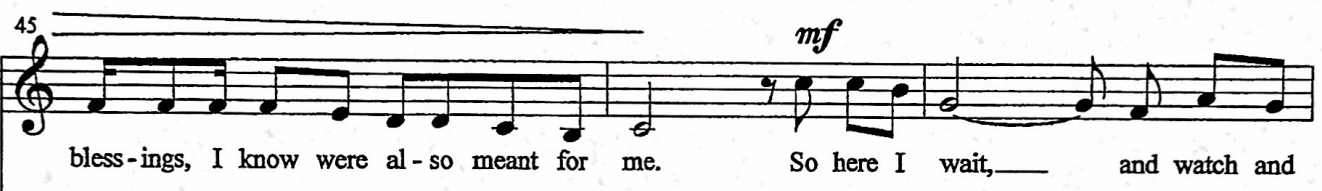
A single vocal staff in treble clef. The melody consists of eighth and quarter notes. The lyrics are: "Blessings from on high, I know, you have re - ceived. Those same".

Pno.



Piano accompaniment for measures 43-44. The right hand plays chords and single notes, while the left hand plays a steady eighth-note bass line. A fermata is placed over the final chord in the right hand.

45 *mf* bless - ings, I know were al - so meant for me. So here I wait, — and watch and



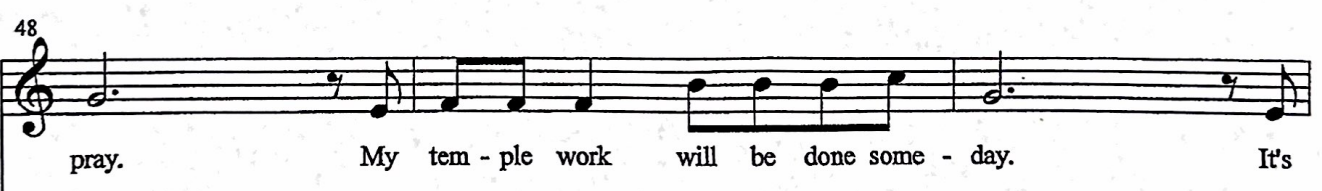
Vocal line for measures 45-46. The melody continues with eighth and quarter notes. The lyrics are: "bless - ings, I know were al - so meant for me. So here I wait, — and watch and". A dynamic marking of *mf* is placed above the first measure.

Pno.



Piano accompaniment for measures 45-46. The right hand features chords and eighth-note patterns. A dynamic marking of *mf* is placed below the right hand in the second measure. The left hand continues with eighth-note accompaniment.

48 pray. My tem - ple work will be done some - day. It's



Vocal line for measures 48-49. The melody is mostly quarter notes. The lyrics are: "pray. My tem - ple work will be done some - day. It's".

Pno.



Piano accompaniment for measures 48-49. The right hand plays chords and eighth notes. The left hand plays a steady eighth-note bass line.

51
 up to you— my child so please re - call, Your

Pno.

53 *p rit.*
 fam - 'ly chain— ex - tends be - yond these walls. Find me, find me, find

Pno.

56 *mf a tempo*
 me. I pray that you'll— do re - search and

Pno.

58

find my birth— and death. They're re - cor - ded in— life's re - cords, you just

Pno.

58

60

have to search a bit. My death, my birth,— my mar - riage date are

Pno.

60

cresc.

62

all right there you'll see, Sub - mit my work— and seal e - ter - ni - ty. I've

Pno.

62

65 *mf*
now been taught the gos - pel, I know that it is true. I've

A single staff of music in treble clef. It begins with a treble clef and a dynamic marking of *mf*. The melody consists of eighth and quarter notes. The lyrics are: "now been taught the gos - pel, I know that it is true. I've".

Pno. *mf*

A grand staff of music for piano. It consists of a treble clef staff and a bass clef staff. The treble staff has a dynamic marking of *mf*. The accompaniment features chords in the treble and a steady eighth-note bass line. The lyrics "now been taught the gos - pel, I know that it is true. I've" are aligned with the vocal line above.

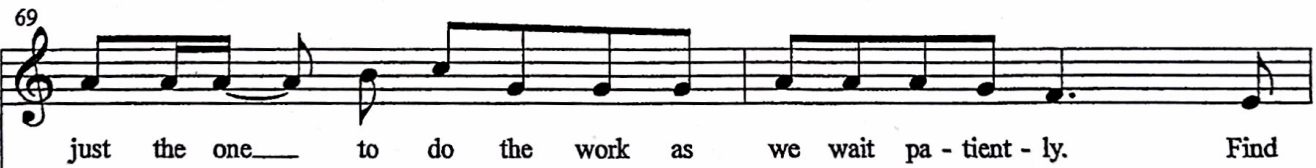
67
taught my fam - 'ly and my friends, and now we wait for you. You're

A single staff of music in treble clef. The melody continues with eighth and quarter notes. The lyrics are: "taught my fam - 'ly and my friends, and now we wait for you. You're".

Pno.

A grand staff of music for piano. The treble staff continues with chords and the bass staff continues with the eighth-note bass line. The lyrics "taught my fam - 'ly and my friends, and now we wait for you. You're" are aligned with the vocal line above.

69
just the one to do the work as we wait pa - tient - ly. Find

A single staff of music in treble clef. The melody continues with eighth and quarter notes. The lyrics are: "just the one to do the work as we wait pa - tient - ly. Find".

Pno.

A grand staff of music for piano. The treble staff continues with chords and the bass staff continues with the eighth-note bass line. The lyrics "just the one to do the work as we wait pa - tient - ly. Find" are aligned with the vocal line above.

71 *mf*

us and turn the child-ren's hearts to me. So here we wait, and watch and

Pno.

74

pray. Our tem - ple work will be done some - day. It's

Pno.

77

up to you my child, so please re - call, Your fam-'ly chain ex-tends be-yond these

Pno.

80

walls, Your fam - 'ly chain — ex - tends be - yond these

Pno.

82

walls. We wait, we wait, we wait.

Pno.